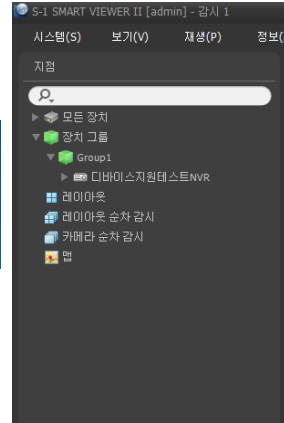
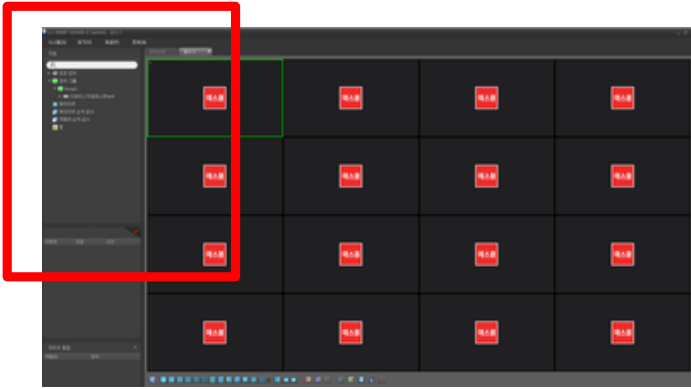
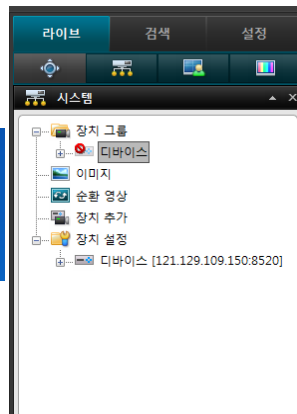
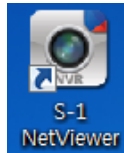
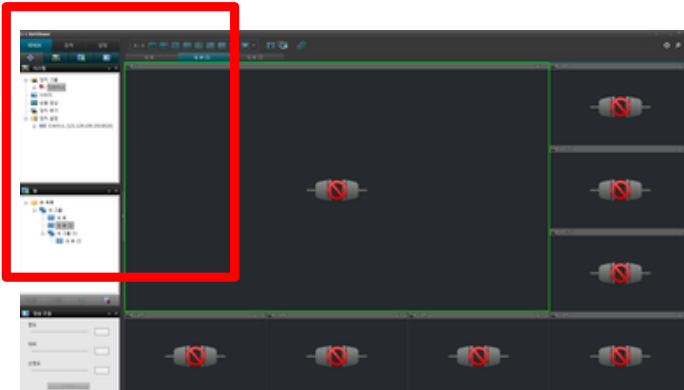


1. PC 뷰어 프로그램 종류 확인해 주세요

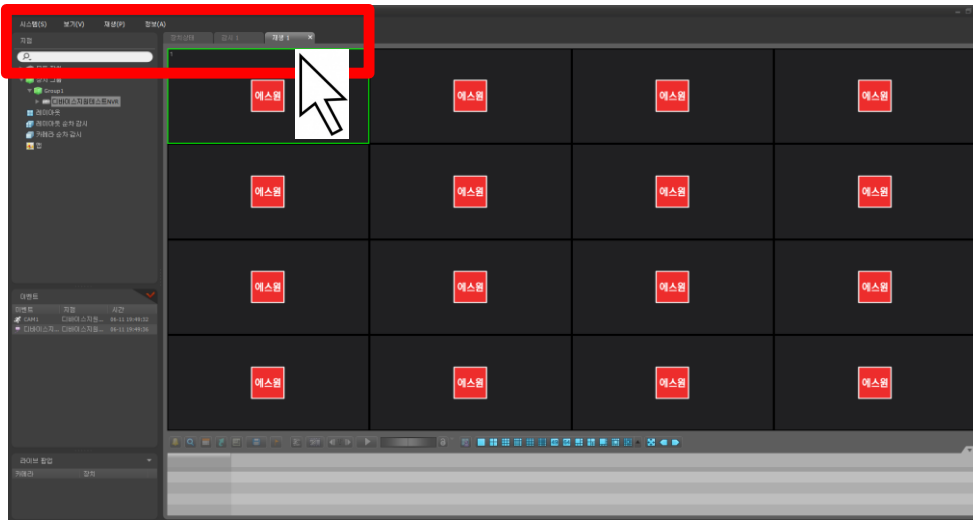
왼쪽 부분이 검은색이면 스마트뷰어입니다



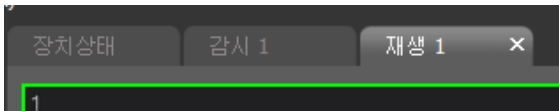
왼쪽 부분이 흰색이면 넷뷰어입니다



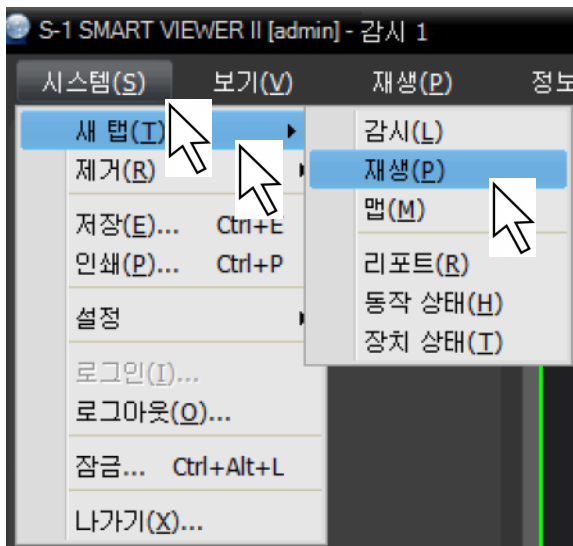
스마트 뷰어(IDIS)



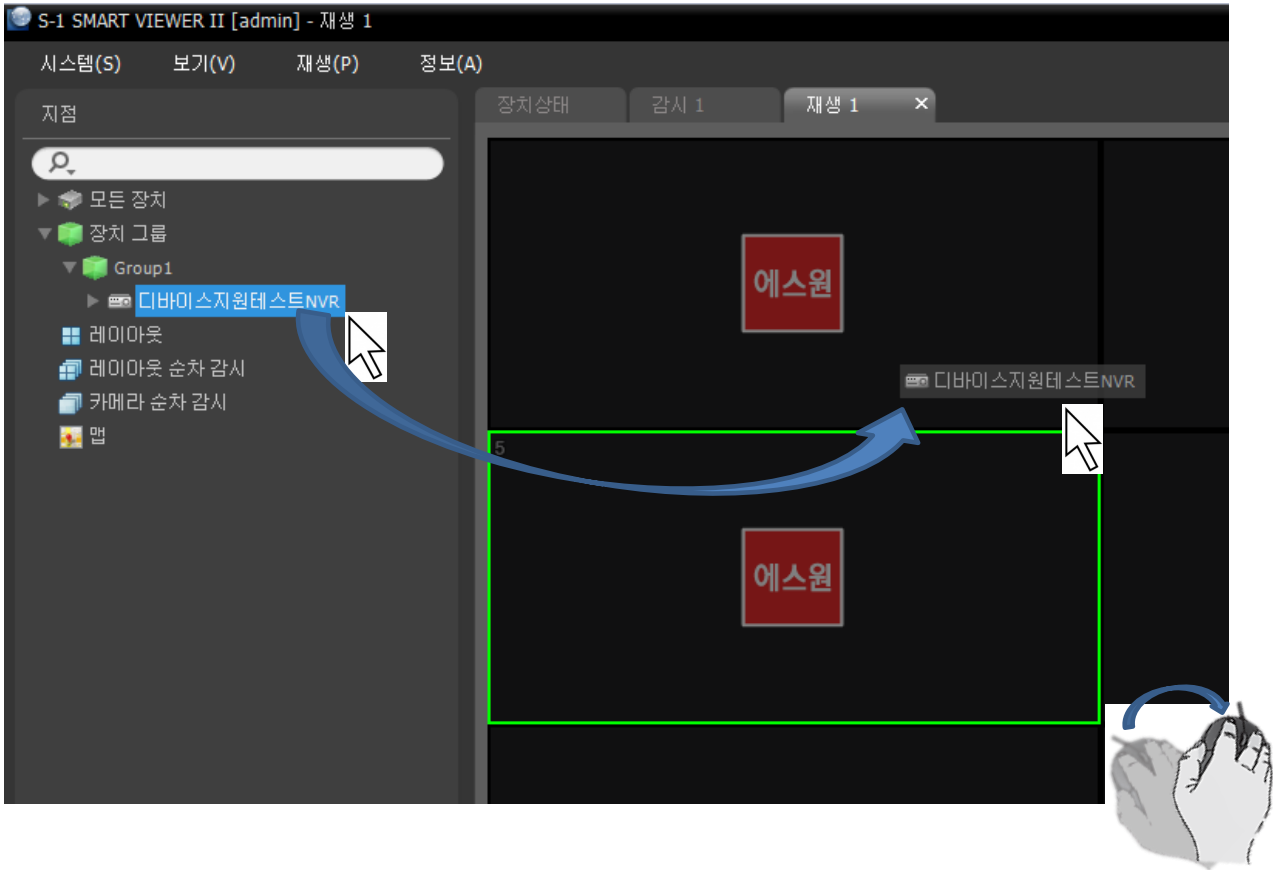
프로그램 위쪽의 재생 탭을 클릭하세요



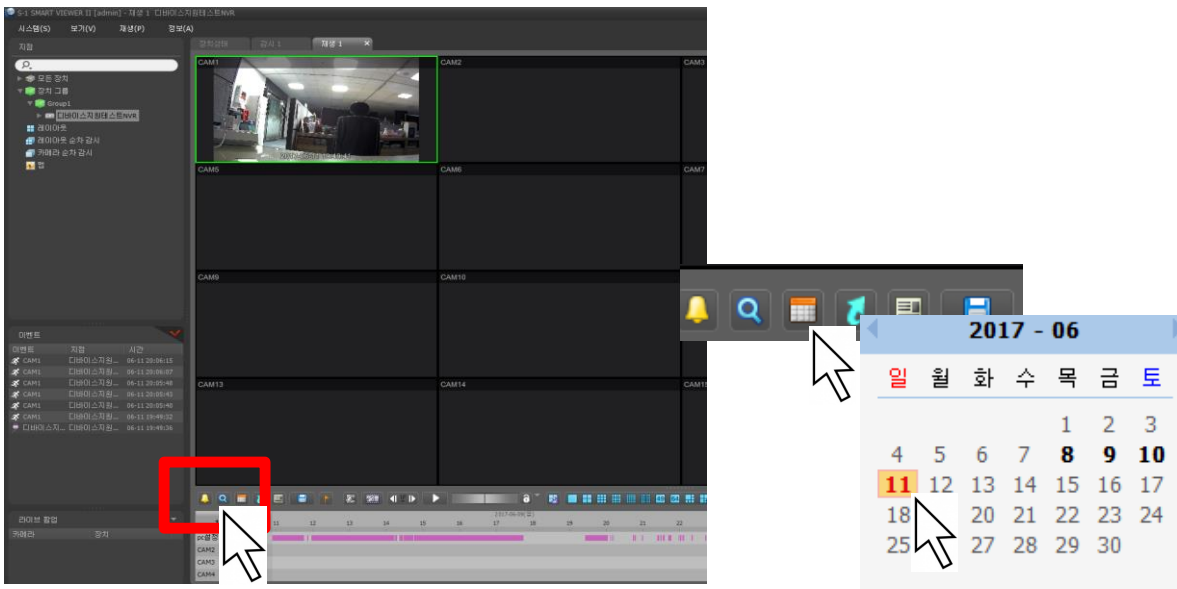
재생탭이 없는 경우 왼쪽 위 메뉴의 시스템->새탭->재생 클릭



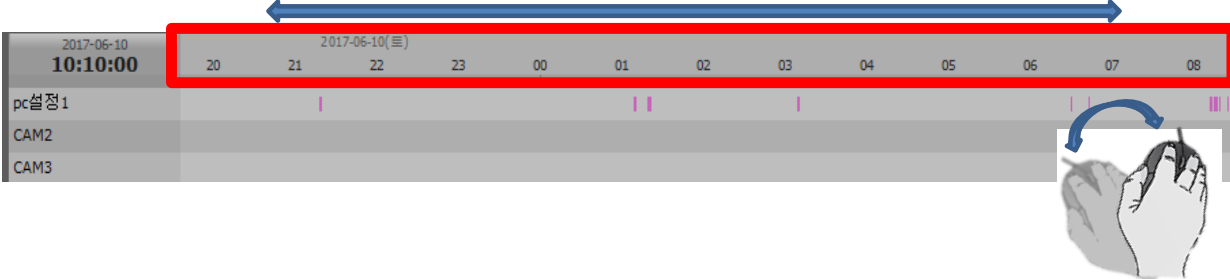
영상을 백업할 장치를 왼쪽 장치 그룹에서 선택하여 재생 탭으로 드래그합니다



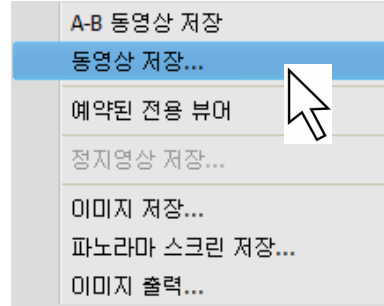
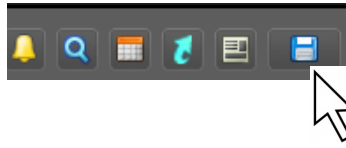
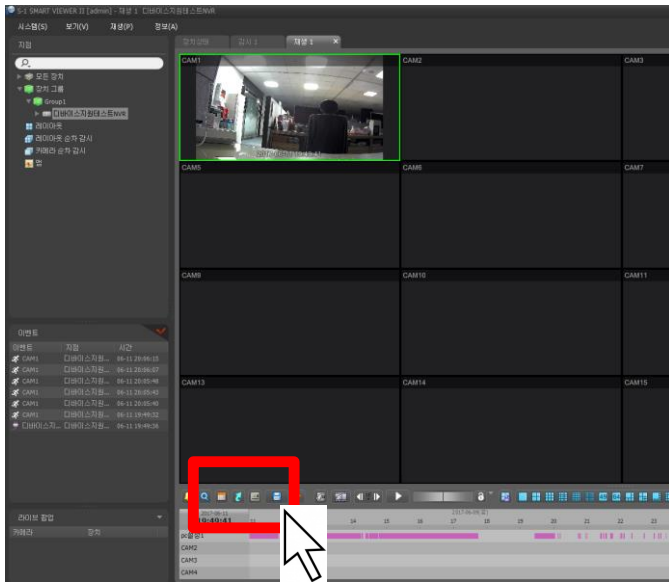
아래쪽 달력을 클릭하여 날짜를 선택하거나



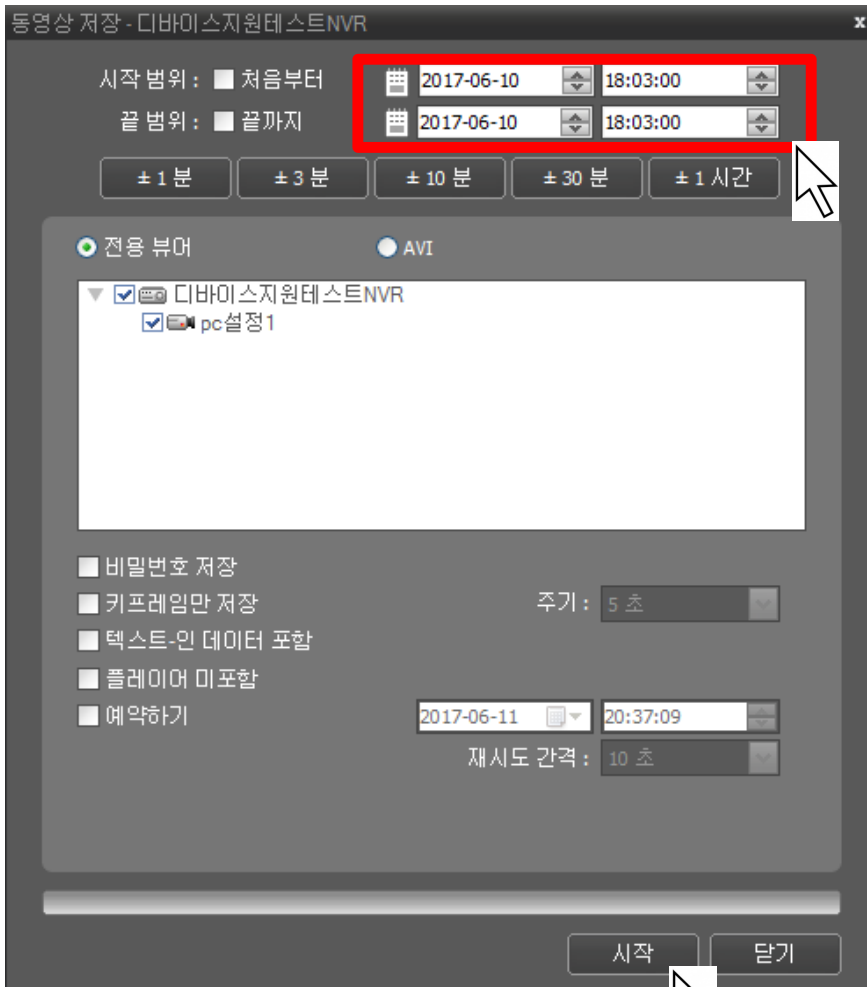
아래쪽 타임라인의 날짜/시간 표시 부분을 클릭후 드래그 하여 백업 하려는 날짜를 찾고



저장 버튼을 클릭후 동영상 저장을 클릭합니다



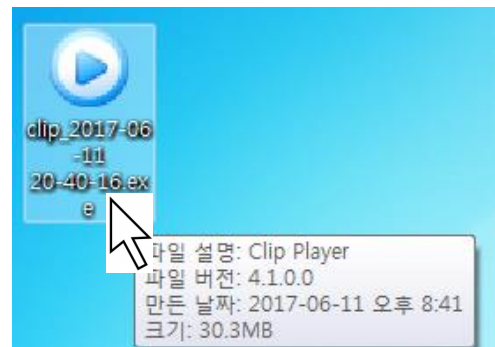
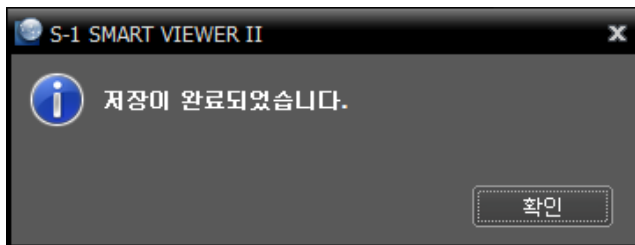
백업할 날짜 시간을 선택후 시작 버튼을 클릭합니다



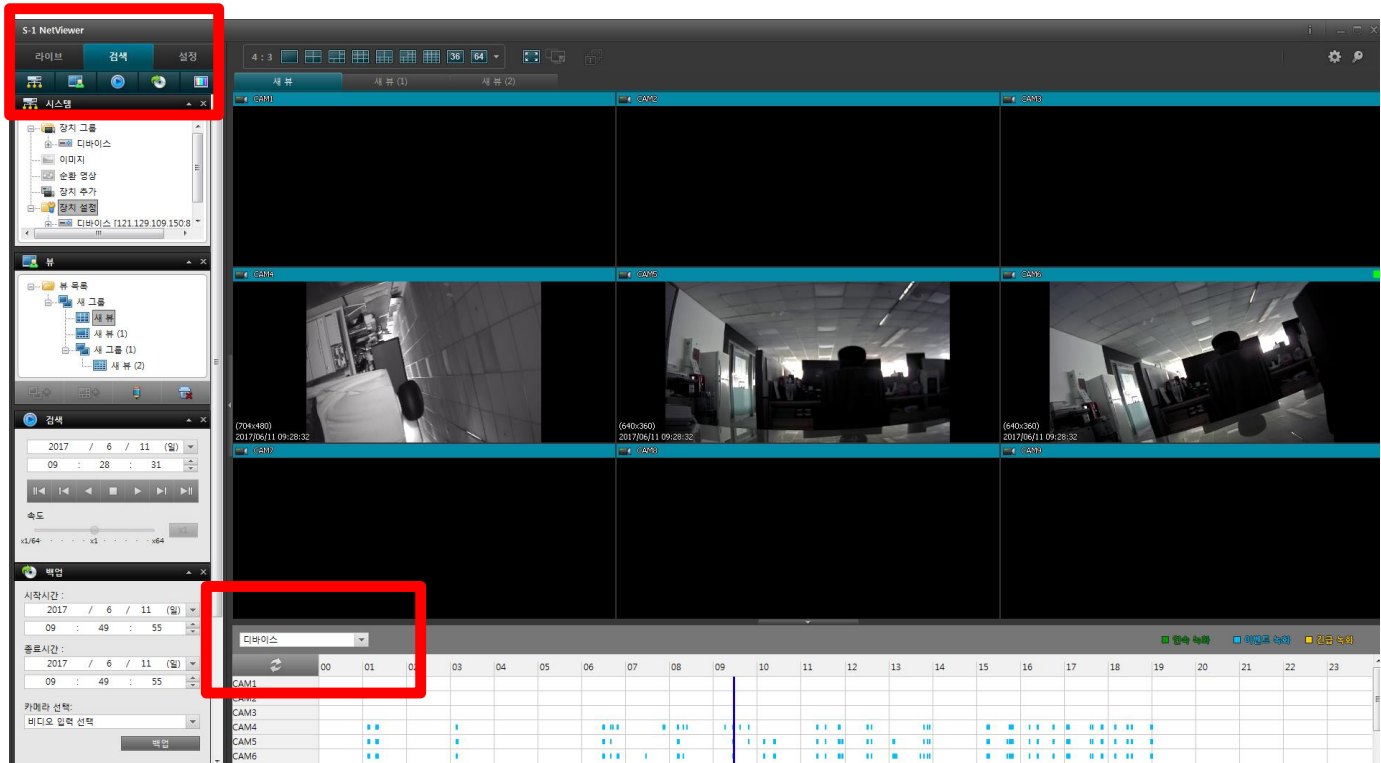
저장할 위치를 선택후(바탕화면 권장) 저장 버튼을 클릭합니다



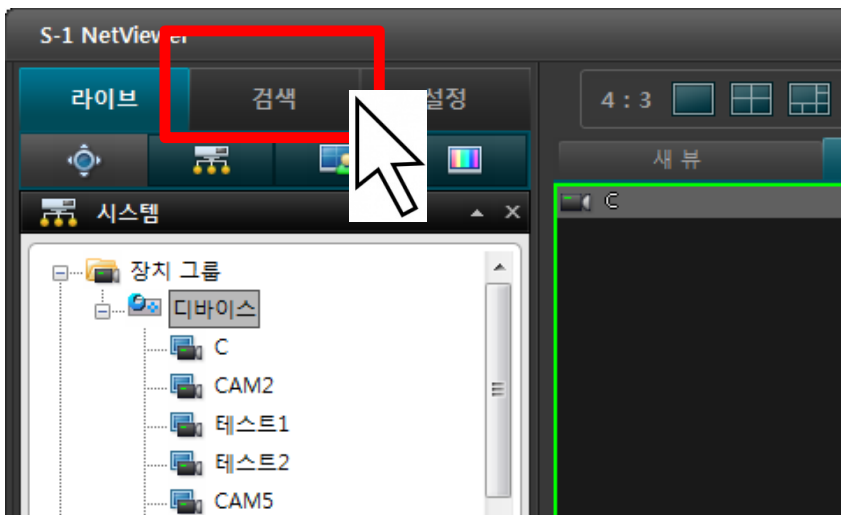
저장이 완료되었습니다.



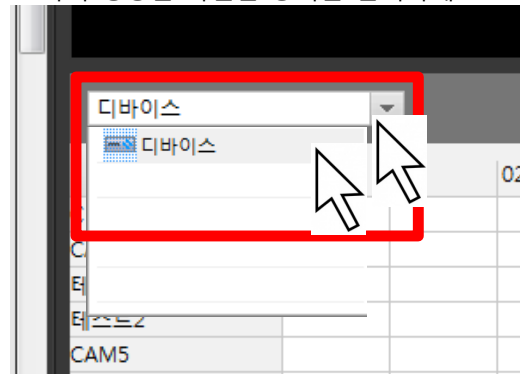
□넷뷰어(ITX)

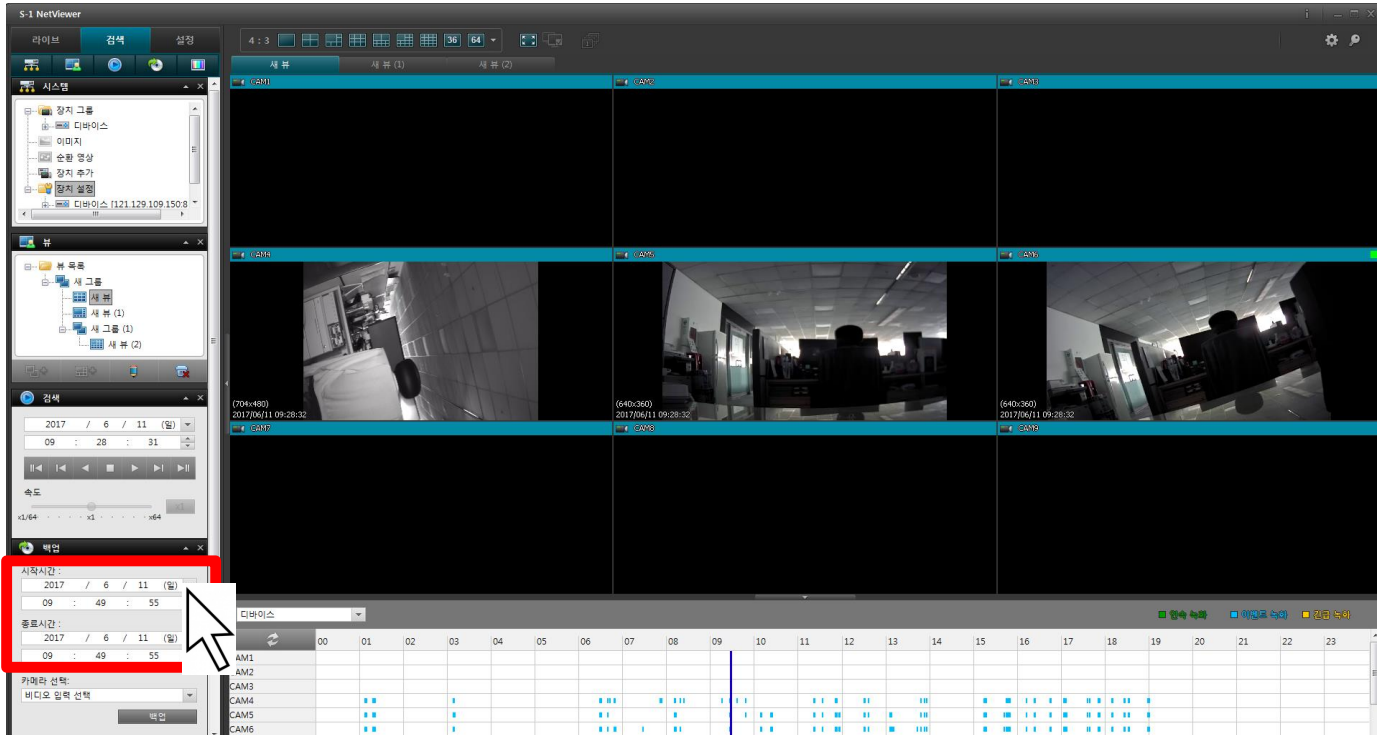


왼쪽 위 검색 탭을 클릭하세요

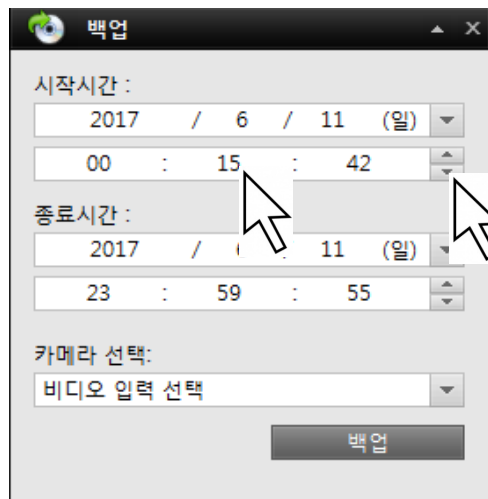
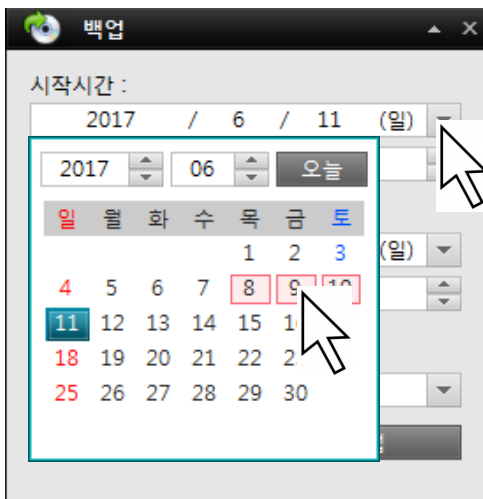


아래쪽 장치 선택 박스를 클릭해서
녹화 영상을 확인할 장치를 선택하세요

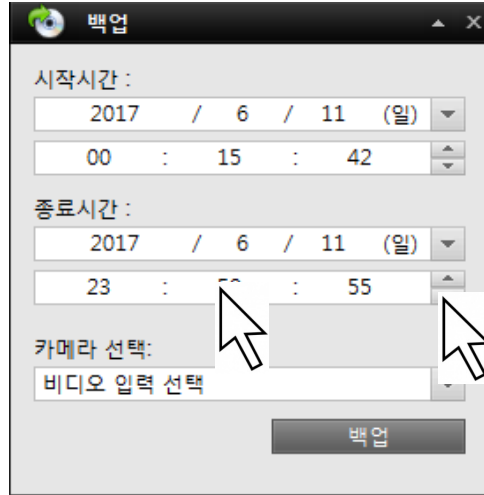
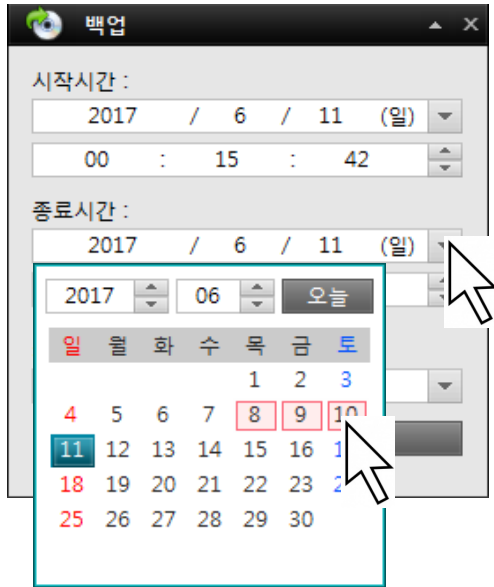




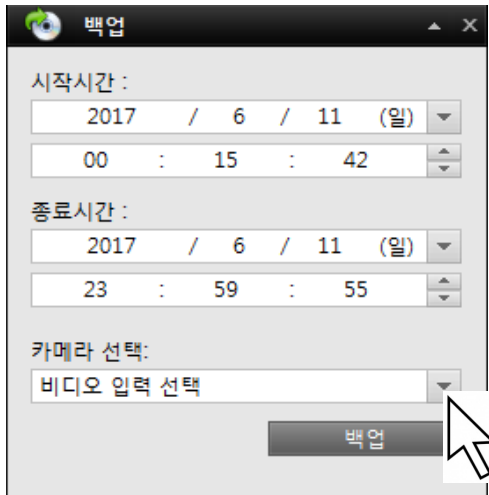
왼쪽의 [백업]에서 시작시간의 날짜 옆 삼각형 클릭후 날짜를 선택하세요
아래 시/분/초 선택후 오른쪽 삼각형을 클릭하여 시간 설정 하세요



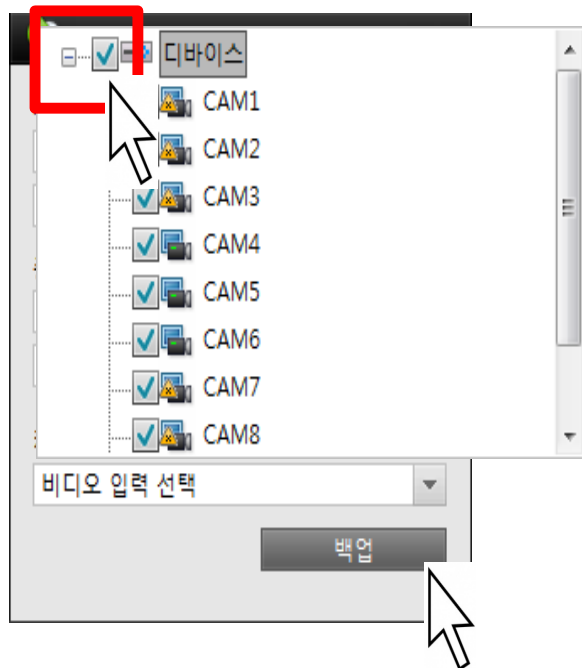
종료시간도 같은 방법으로 설정해 주세요



카메라 선택 화살표를 클릭

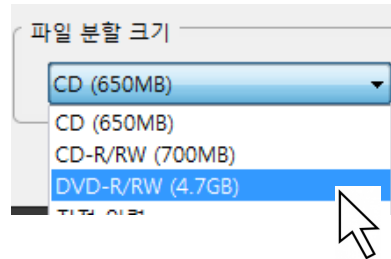


녹화기 옆의 체크 박스를 클릭하면 모든 카메라의 영상을 저장합니다 그리고 백업 버튼 클릭



목적지 데스크탑 선택

파일 분할 크기 선택(*DVD-R/RW(4.7GB) 권장)후 백업시작 버튼 클릭



바탕화면에 백업이 완료 되었습니다

